

BIO | CLAD

WALL PROTECTION SYSTEMS



Sectors



Healthcare



Education



Care Homes



Retail/Hospitality



Sports & Leisure



Warehousing

BioClad Wall Protection Systems

Bio Armis wall protection offers the solution in reducing repairs and redecoration requirements to all walls in high traffic areas. With products that are suitable for areas such as corridors and walkways, in all sectors of Healthcare, Retail, Hospitality, Pharmaceutical, Commercial Offices and Warehousing.

Bioclad offers Wall Protection ensuring that any environment is protected with superior performance. Our products are suitable for vulnerable areas and provides an impact-resistant and hard-wearing composition that is also scratch-resistant, long-lasting, high-quality wall protection range.

We offer our clients a premium range of proven textured wall protection systems which includes Crash Rails, Bump Rails, Handrails, Bed Head Protectors, Corner Protection and Hygienic Wall Cladding which has an antimicrobial additive.

Available in a variety of colours and sizes, Bio Armis is the perfect and stylish answer to your wall damage dilemma whilst giving peace of mind.



A guide to Wall Protection

Wall Guards

P5005: 150mm x 30mm x 3m Continuous Wall Guard, curved to provide an aesthetic appearance, is mounted directly to the wall using a continuous aluminium retainer for ease of installation and comes complete with a rubber insert to aid impact absorption.

P5000: 200mm x 30mm x 3m Continuous Wall Guard, curved to provide an aesthetic appearance, is mounted directly to the wall using a continuous aluminium retainer for ease of installation and comes complete with a rubber insert to aid impact absorption.

P5015: 100mm x 20mm x 3m Continuous Wall Guard is mounted directly to the wall using a continuous aluminium retainer for ease of installation and comes complete with a rubber insert to aid impact absorption. Available in 12 different colours.

P5020: 150mm x 20mm x 3m Continuous Wall Guard is mounted directly to the wall using a continuous aluminium retainer for ease of installation and comes complete with a rubber insert to aid impact absorption. Available in 12 different colours.

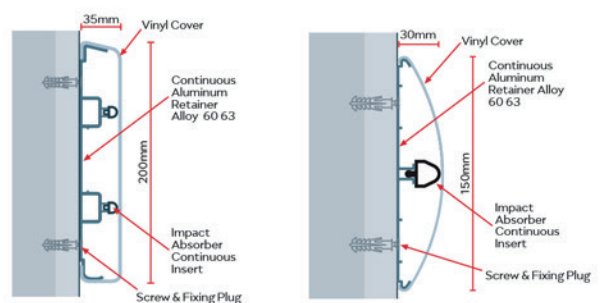
P5025: 200mm x 35mm x 3m Continuous Wall Guard is mounted directly to the wall using a continuous aluminium retainer for ease of installation and comes complete with a rubber insert to aid impact absorption. Available in 12 different colours.

P5030: 100mm x 50mm x 3m Continuous Wall Guard is supplied as a wider option to allow for indirect protection when wheeled traffic has protrusions. It is mounted directly to the wall using a continuous aluminium retainer for ease of installation.

P2100: 200mm x 3m Vinyl wall strips, used as a rub-rail to offer protection where direct impact occurs on walls, such as chairs in waiting rooms.



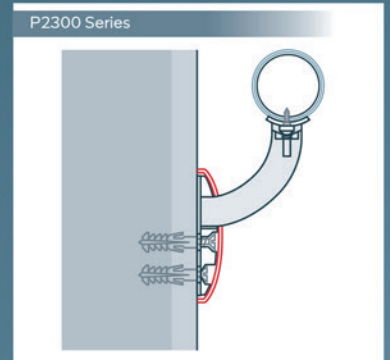
P5000 Series



Handrails

P2300: 42mm dia PVC handrail, complete with fixing brackets. Available in 32 colours which can be used to aid the visually impaired and can help with wayfinding. Supplied in 4m lengths.

P2305: 42mm dia Timber Handrail complete with Stainless Steel fixing brackets, supplied in 4m lengths.

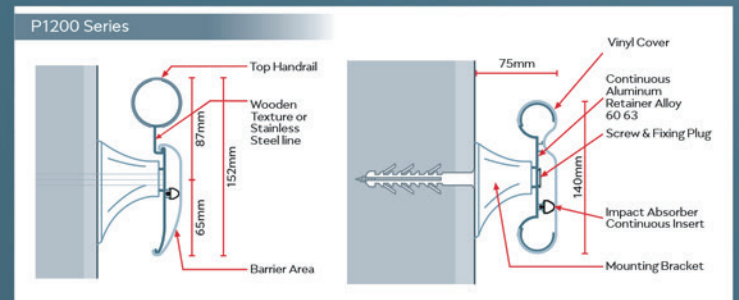


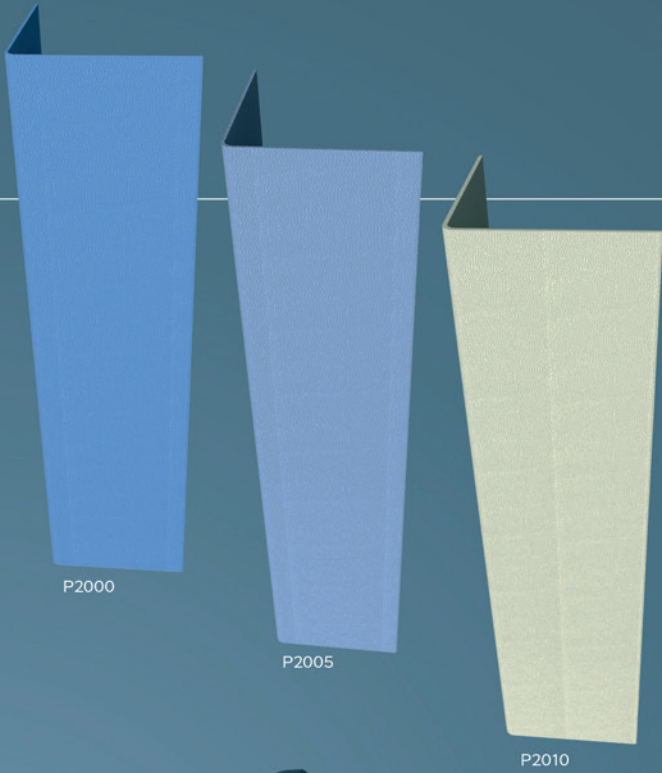
Combi Rails

P1200: 152mm x 85mm x 3m Combination Handrail. This product utilizes a continuous aluminium retainer and is fixed at 60-75cm centres with fixing brackets. The Vinyl textured coating protects against impact and abrasion and is ideally suited for busy healthcare environments such as corridors, the integrated handrail acts as an aid for the physically impaired and the use of colours can be used as a visual aid and for wayfinding. Available in 32 colours, the product is supplied in 3m lengths and can be supplied with end caps and returns.

P1210: 152mm x 90mm x 3m Combination Handrail. This product utilizes a continuous aluminium retainer and is fixed at 60-75cm centres with fixing brackets. The Vinyl textured coating protects against impact and abrasion and is ideally suited for busy healthcare environments such as corridors, the integrated handrail acts as an aid for the physically impaired and the use of colours can be used as a visual aid and for wayfinding. Can be supplied with end caps and returns.

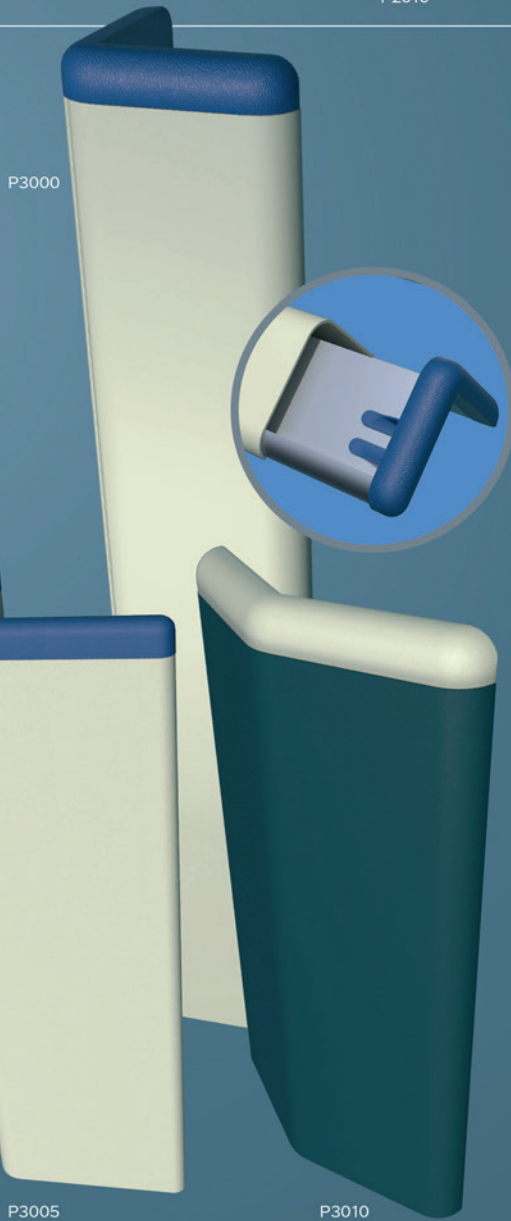
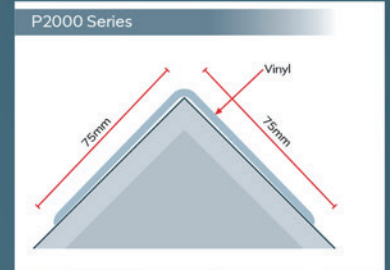
P2200: 145mm x 85mm x 3m Combination Handrail. This product utilizes a continuous aluminium retainer and is fixed at 60-75cm centres with fixing brackets. The Vinyl textured coating protects against impact and abrasion and is ideally suited for busy healthcare environments such as corridors, the integrated handrail acts as an aid for the physically impaired and the use of colours can be used as a visual aid and for wayfinding. Can be supplied with end caps and returns.





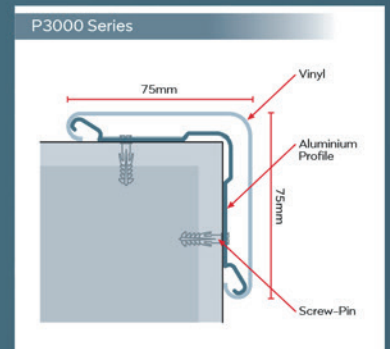
Corner Protection

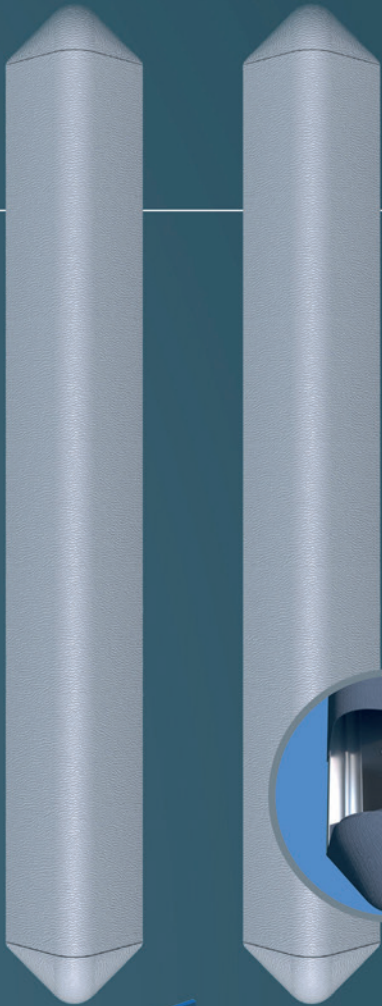
P2000/P2005/P2010:
75mm/50mm/25mm Standard Corner Guards. Manufactured from textured vinyl and can be supplied with or without fixing tape, these are an ideal solution for protecting vulnerable corners in buildings and are supplied in the same 32 colours as our vinyl wall sheet to match your surroundings perfectly.



Heavy Duty Protection

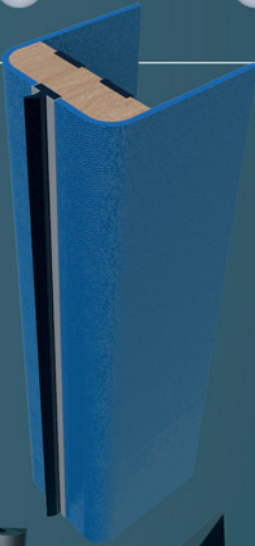
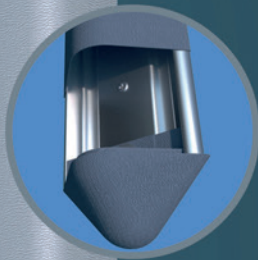
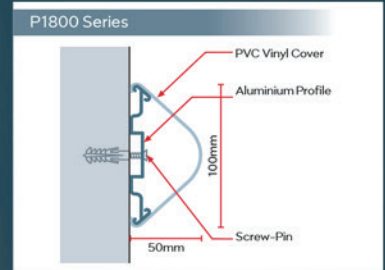
P3000/P3005/P3010:
50mm/75mm/75mm (135 degree) High Impact Corner Guards. Manufactured from textured vinyl outer skin and supplied with a continuous aluminium retainer, these are an ideal solution for protecting vulnerable corners in buildings where heavy impact occurs such as corridors where there would be heavy wheeled traffic such as hospital beds and linen cages and are supplied in the same 32 colours as our vinyl wall sheet to match your surroundings perfectly.





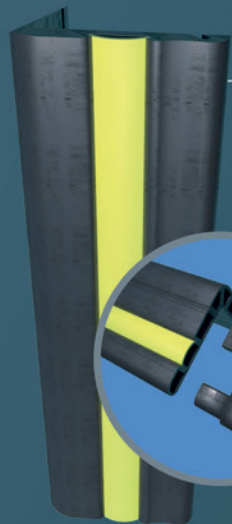
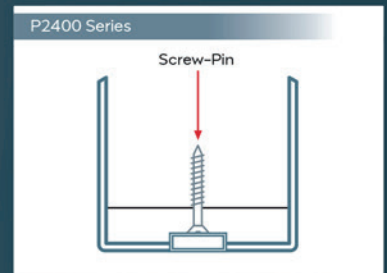
Bed Head Protection

P1800: 100mm x 50mm Bed Head Protectors, supplied as a pair, 750mm in height, complete with matching top and bottom caps, these items are ideal for hospital wards where beds are constantly being moved around and ensure protection of walls. Fitted directly to the wall using an aluminium retainer and with a vinyl cover.



Door Edge Protection

P2400: Door Edge Protectors are designed and manufactured to prevent damage to fire doors in busy traffic areas, reducing the need to replace the whole door, these items can be simply fitted over the existing door and the leading and hinged edges to protect and maintain the integrity of fire doors, and are supplied with intumescent strips/brushes thus eliminating expensive replacement costs



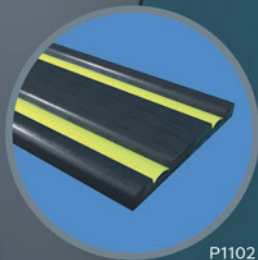
P1902



P1900



P1901



P1102

High Impact Rubber Protection

P1900/P1100: Heavy duty rubber corner guards/wall guards are designed to provide extra protection where required, such as back of house and warehousing, where vehicles such as fork lift trucks operate as well as areas such as trolley bays in supermarkets, manufactured from rubber and supplied in black with optional yellow flashing strips

Specifications

For further information visit:

www.bioclad.com/product/wall-protection

For technical data sheets and individual specification details please use the QR code provided.



SCAN ME

Colour Options

32 colours available subject to Lead times and MOQ



Light Grey LRV 34.45



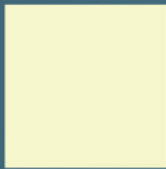
Dark Grey LRV 19.12



Light Blue LRV 18.68



Dark Blue LRV 12.85



Cream LRV 66.92



White LRV 83

UK & EU Accreditations



RIBA approved CPD seminar available on request.



Benefits

- Easily wipe clean
- Impermeable
- Durable/impact resilient
- Wide range of colours

- All ranges have been measured to provide LRVs
- Contrasting colours available
- Easy and comfortable to grip

BioClad® Limited (Head Office)
Unit 1A, Creengate, Cardale Park, Harrogate,
North Yorkshire, HG3 1CY

Tel: +44 (0) 330 100 0313 Email: sales@bioclad.com

www.bioclad.com

BIO | CLAD